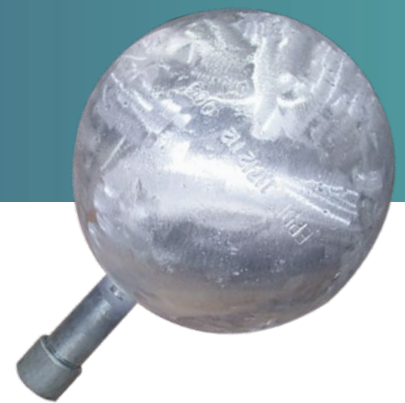




SPHERICAL ALUMINUM HEATER TREATER ANODES



50 YEARS EXPERIENCE IN CATHODIC PROTECTION



JENNINGS ANODES

ALUMINUM HEATER TREATER ANODES

DATA SHEET

This aluminum anode ball is a compact easily replaced sacrificial anode which is installed in heat treaters, pressure vessels and other production vessels. It works optimally at relatively high temperatures and low chloride saltwater or freshwater environments.

■ Quality Substrate Material

Casted in low-iron, high-purity alloys, our indium-activated aluminum anode is designed to meet the standard of ISO, NACE, DNV.

Standard Element	GALVALUM III	DNV-RP-B401-2011	GS EP COR 201
Zinc (Zn)	2.0% ~ 6.0%	2.5% ~ 5.75%	4.75% ~ 5.75%
Indium (In)	0.01% ~ 0.02%	0.015% ~ 0.04%	0.015% ~ 0.02%
Silicon (Si)	0.08% ~ 0.2%	0.12% max.	0.06% ~ 0.12%
Iron (Fe)	0.13% max.	0.09% max.	0.12% max.
Copper (Cu)	0.006% max.	0.003% max.	0.003% max.
Cadmium (Cd)	—	0.002% max.	0.002% max.
Total Impurities	0.1% max.	0.1% max.	0.1% max.
Aluminum (Al)	Remainder	Remainder	Remainder

■ Low Driving Voltage

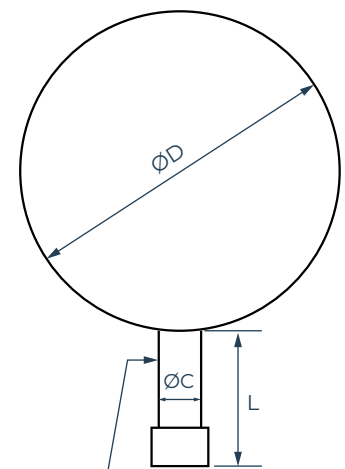
This aluminium anode provides a stable performance in seawater and electrolytes containing chloride ions as its operating potential is kept between -1.05 to -1.10 volts.

Technical Measurement	Performance
Open Circuit Voltage (-V)	1.10 min.
Closed Circuit Voltage (-V)	1.05 min.
Current Capacity	1135 A.h/lbs (2500 A.h/kg)
Current Efficiency	90% min.
Consumption Rate	7.6 lbs/A.y (3.4 kg/A.y)

* The open/closed circuit voltage is with respect to a Ag/AgCl reference electrode.

SPECIFICATIONS

Item No.	Ball Diameter	Insert Dimensions			Weight	
		ØC	L	NPT	N.W	G.W
JA-AL-B47	9.84" (250 mm)	1.3" (34 mm)	4.0" (102 mm)	1"	47.8 lbs (21.7 kg)	49.5 lbs (22.5 kg)



1" Sch. 80 Steel Pipe

Notes: All dimensions and weights are nominal. The parameter provided is subject to variation in material compositions and Jennings Anodes foundry tolerance.

ALUMINUM HEATER TREATER ANODES

DATA SHEET



TESTING DETAILS

We employ ISO 9001:2015 quality management system and rigorous internal testing standards to ensure the optimum lifespan and performance of our anodes. Each anode is labelled with a unique serial number for quality tracking.

Technical Measurement	Chemical Composition	Electrochemical Performance	Physical Properties
Testing Standard	DNV-RP-B401	NACE TM0190	Foundry ITP
Testing Content	Chemical Analysis	Circuit Potential Current Capacity Current Efficiency Electrical Resistance	Dimension & Weight Surface Finish Steel Insert
Equipment	Optical Emission Spectrometer OBLF QSN 750	Electrochemical Analyzer EPI 200	Calibrated Digital Measuring Devices

* Third party testing is conducted by customer's special request at extra charge.



Worldwide Service Network

Our worldwide network of sales and service centers can provide immediate advice and assistance on the complete range of products.

Global Headquarter

3115 Fry Road Ste 303, Katy, Texas
77449, United States

Email: sales@jenningsanodes.com
Tel: +1 (281) 501 8398 / +1 (713) 799 3884

www.jenningsanodes.com

UK Office

Tatham Street, Hendon, Sunderland
SR1 2AG, United Kingdom

Email: sales@jenningsanodes.co.uk
Tel: +44 (0) 191 510 8843
Fax: +44 (0) 191 514 7749

www.jenningsanodes.co.uk

Asia Pacific Office

120 Lower Delta Road, #07-13 Cendex
Centre, Singapore 169208

Email: inquiries@jenningsanodes.com
Tel: +65 6715 1514



View Our Website



Follow Us On LinkedIn